

FUJI CO., LTD

1F, NO.32, JIANGUO N. RD., JUNGLI CITY.TAOYUAN, TAIWAN 320, R.O.C.

TEL : 886-3-425-4927

FAX : 886-3-426-9652

SPECIFICATION

P/N: LCT-MD1112-08U

FUJI CO., LTD

1F, NO.32, JIANGUO N. RD., JUNGLI CITY.TAOYUAN, TAIWAN 320, R.O.C.

TEL : 886-3-425-4927

FAX : 886-3-426-9652



+



Description



The **LCT-MD1112-08U** is a Talent 8 LEDs Module. It is integrated by modular LED Light-bar of 1W **Luxeon** high power LEDs and **Alva-AH350** CCD power supply. This product line provides simple and compact solution for traditional lighting in different size fitted into existing fixture. *Other sizes including LED PCB and CCD power supply, other LEDs, other colour pattern, other Light-bar layout and other CCD driver layout are available on request.*

Features

- The heat is efficiently managed at preferable working temperature.
- Small/Compact size.
- Easy for being retrofitted into existing traditional lighting fixture

Benefits

- Have flexible configurations including Warm white, White, Red, Green, Blue, Amber and RGBW mixed and other customized configuration.
- Light weight
- Enhance the value of your products

- Provides flexibility to designers
- It is a hazard free product
- It can be integrated into existing lighting system
- Facilitates new fixture design
- Facilitates low profile fixture design
- Optimisation of the usage of the system power.

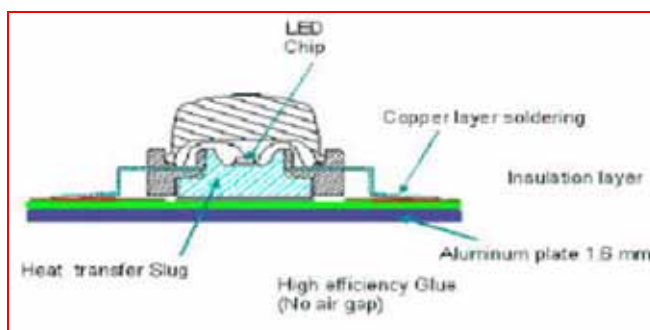
Typical Applications

- Architectural lighting
- Garden lighting
- In-ground lighting.
- Floodlight.
- Cove lighting
- Cornice lighting
- Landscape lighting
- Under-Water lighting
- Vending machine lighting
- Wall sconces
- Under-cabinet lighting
- Projectors
- Decorative lights

Note:

1. This MCPCB product required additional heat sink.
2. System to keep working temp at preferable temperature 55 .

Construction of MCPCB / LED:



PS: Unique construction of Metal Core Print Circuit Board (MCPCB) with slug through contact to Aluminium substrate transferring heat from LED chip straight away and quickly to outside environments.

FUJI CO., LTD

1F, NO.32, JIANGUO N. RD., JUNGLI CITY.TAOYUAN, TAIWAN 320, R.O.C.

TEL : 886-3-425-4927

FAX : 886-3-426-9652

Selection Guide			
Part Number	Description		
LCT-MD1112-08U-1WW-B	1W warm White/8 LEDs bar/Batwing	LCT-MD1112-08U-1M-B	1W RGBW/8 LEDs bar/Batwing
LCT-MD1112-08U-1W-B	1W White/8 LEDs bar/Batwing	LCT-MD1112-08U-1M-L	1W RGBW/8 LEDs bar/Lambertian
LCT-MD1112-08U-1W-L	1W White/8 LEDs bar/Lambertian	LCT-MD1112-08U-1M-S	1W RGBW/8 LEDs bar/Side emitting
LCT-MD1112-08U-1W-S	1W White/8 LEDs bar/Side emitting	LCT-MD1112-08U-1XXX-X	1W Customized/8 LEDs bar
LCT-MD1112-08U-1R-B	1W Red/8 LEDs bar/Batwing	Note: The XXX-X is the project code of the customized products.	
LCT-MD1112-08U-1R-L	1W Red/8 LEDs bar/Lambertian	Electrical characteristics	
LCT-MD1112-08U-1R-S	1W Red/8 LEDs bar/Side emitting	<i>Input</i>	
LCT-MD1112-08U-1G-B	1W Green/8 LEDs bar/Batwing	Parameter	Min Max
LCT-MD1112-08U-1G-L	1W Green/8 LEDs bar/Lambertian	Input Voltage Range	85Vac 264Vac
LCT-MD1112-08U-1G-S	1W Green/8 LEDs bar/Side emitting	Input Frequency	47Hz 63Hz
LCT-MD1112-08U-1B-B	1W Blue/8 LEDs bar/Batwing	Input Current	N/A 2.0A-115Vac/60Hz
LCT-MD1112-08U-1B-L	1W Blue/8 LEDs bar/Lambertian	Efficiency	Typical 80%-85%
LCT-MD1112-08U-1B-S	1W Blue/8 LEDs bar/Side emitting	Environmental Ratings	
LCT-MD1112-08U-1A-B	1W Amber/8 LEDs bar/Batwing	Parameter	Min Max
LCT-MD1112-08U-1A-L	1W Amber/8 LEDs bar/Lambertian	Operating Ambient Temperature	-10 60
LCT-MD1112-08U-1A-S	1W Amber/8 LEDs bar/Side emitting	Storage Ambient Temperature	-20 80

LED Selection (per Luxeon from LUMILEDS)

Color	Radiation pattern	Dominant wavelength nm	LED Watts	Lumens / emitter
Red	Batwing/ Lambertian / Side emitting	630	1	B:27 / L:42 / S:40
Amber		594	1	B:25 / L:42 / S:38
Green		525	1	48
Blue		470	1	16
White		5500 K	1	40
Warm White	Batwing	3000 – 3500 K	1	20

FUJI CO., LTD

1F, NO.32, JIANGUO N. RD., JUNGLI CITY.TAOYUAN, TAIWAN 320, R.O.C.

TEL : 886-3-425-4927

FAX : 886-3-426-9652

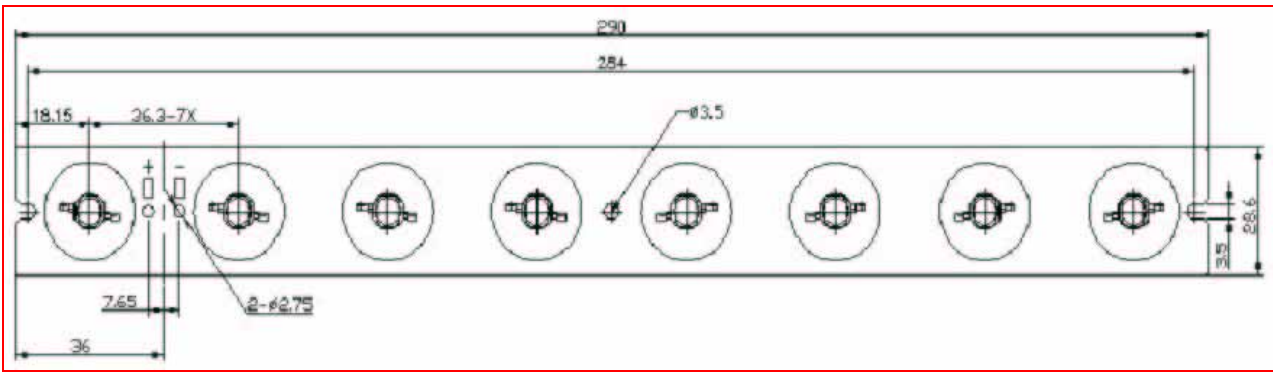
Drawing and Diagram

1. Alva CCD LED Driver. (120mm* 20mm)



Note: Other circuit layouts and size available on request

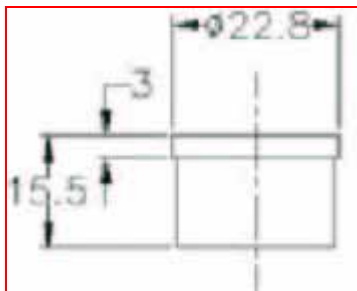
2. LED Module. (290mm* 28.6mm, Plate thickness : 1.6mm)



Note:

1. Surface finish : Black / White Solder resist paint.
2. LED on PCB Circuit : 8LEDs in series (other circuit layouts available on request)
3. Connection : 2 open soldering terminals.
4. Option : 10° / 15° / 20° / 25° / 45° Acrylic lens (click-in per each LED), Other lens subject to optional.

10° / 15° / 20° / 25° / 45° Lens holder dimension



5. Recommended max. PCB temperature :+ 55

FUJI CO., LTD

1F, NO.32, JIANGUO N. RD., JUNGLI CITY.TAOYUAN, TAIWAN 320, R.O.C.

TEL : 886-3-425-4927

FAX : 886-3-426-9652

Important: Please contact our engineer to ensure installation and maintenance being properly executed to obtain maximum performance, efficiency and durability from the LED lighting product.

Disclaimer: While every care has been taken with the details on this specification sheet, we accept no responsibility for any inaccuracies and reserve the right to change these specifications without notice to always ensure that you are receiving a superior product.

